

# 3765 Series

## 23" x 3RU Breaker Panel

**-48V or +24V | 500A**

### Overview

The 3765 Series Panel provides a compact power distribution solution with high-capacity, current-interrupting breakers.

The 3765 Breaker Panel has an input voltage options of +24V or -48V and has a maximum capacity of 600 amps.

Up to 24 breakers rated from 5A to 125A can be installed, subject to the overall capacity not being exceeded.

The 3765 Breaker Panel can be supplied with or without a 600A / 50mV shunt.

### Features

- 3RU High: 5.22"
- 23-Inch Rack Mounting
- Current Capacity: 600A
- Operating Voltage: +24 or -48VDC
- 18 Breakers - 5A to 125A
- LED Alarm Indicator
- Form C Relay Contacts

### Standard Configurations

Voltage	Shunt	Alarm	Breaker Positions	Part Number
+24V or -48V	none	Yes	24	111-3765-00
	600A			111-3765-10

### Available Breakers

Amps	Part Number	Amps	Part Number
5A	274.2920.05	50A	274.2920.50
10A	274.2920.10	60A	274.2920.60
15A	274.2920.15	70A	274.2920.70
20A	274.2920.20	80A	274.2920.80
25A	274.2920.25	90A	274.2920.90
30A	274.2920.30	100A	274.2920.100
40A	274.2920.40	125A *	274.2920.125

\* 2-pole device consumes 2 positions.

Note: Breakers must be ordered separately.



### Safety Certification

UL60950-1 2nd Edition  
 CSA22.2, No. 60950-1 2nd Edition  
 EN60950-1 2nd Edition

# 3768 Specifications (Typical at 25°C Unless Otherwise)

## Input/Output

Breaker Type	AM1 with Alarm Contact		
Breaker Current Rating	5A to 125A		
Breaker Interrupt Rating <sup>1</sup>	10kAIC		
Panel Capacity	500A		
Breaker Configuration	24 Breakers		
Alarm Fuses	GMT (recommended 0.5A)		
Voltage	-48V Nominal   42-60VDC	+24V Nominal	21-30VDC

## Alarms

Alarm Indicator	Red LED		
LED Status Indication	OFF = Normal ON = Alarm		
Alarm Relays	Form-C		

Notes:

1. 50kAIC available to special order, consult Applications Engineering.

## Environmental

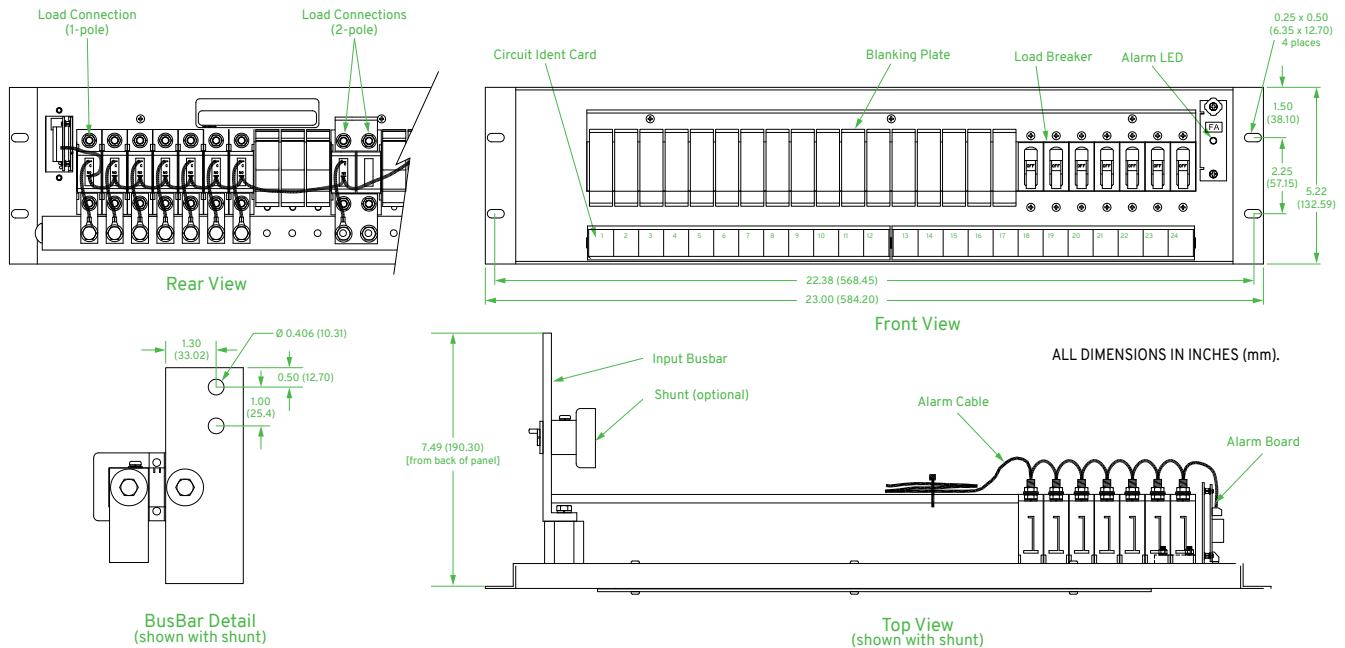
Operating Temp. Range	-10°C to +70°C
Storage Temperature	-40°C to +85°C
Humidity	0% to 95%, Non-Condensing

## Physical

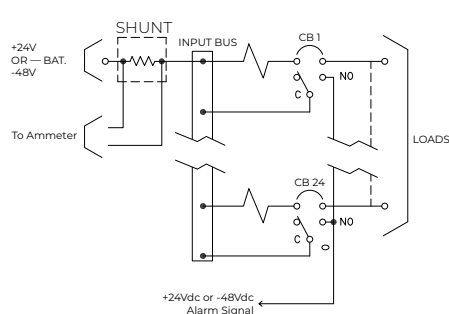
Panel Material	Steel
Finish	Powder Coat Gray
Dimensions, Inches (mm)	5.22 (132.6) H x 23.00 (584.2) W x 7.49 (190.3) D
Weight (excluding breakers)	16 lbs. (7.3 kg.)
Rack Mounting	23 Inch x 3RU

## Connections

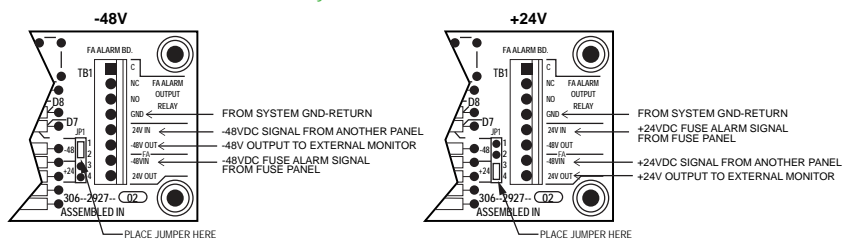
Bus Bar	Accepts 2-hole lug (3/8" Hdw, 1" C-to-C)
Breaker	¼ - 20 Threaded Studs/Nuts
Alarm	Compression/Screw Terminals



## Schematic



## Alarm Board Wiring Detail



## ABOUT GREEN CUBES TECHNOLOGY

Green Cubes Technology harnesses over 30 years of industry experience to ensure we design, develop and deliver solutions for the most challenging energy needs. We offer battery technology innovation, application design and performance management to drive productivity, scalability and sustainability.

Green Cubes provides complete power systems to the stationary power industry. With the addition of the Guardian and Aspiro Product lines offered under the UNIPOWER brand, these industry proven DC plant systems serve critical applications all around the world. Green Cubes offers complete power solutions including energy storage, power conversion, and seamless integration.

For more information, email [contact@greencubes.com](mailto:contact@greencubes.com) or visit [greencubes.com](http://greencubes.com)

