

SAGEON

SAGEON® Shield Standalone Battery Monitor

Overview

The Sageon® Shield battery monitor is a stand-alone solution for monitoring the status of 48V battery strings. The Sageon® Shield, as a member of the Sageon® SageView® software 'family', has the familiar SageView® look and feel. It is also an excellent addition for non-Sageon® plants, adding battery monitoring capability with the same SageView® software interface.

The Sageon® Shield can be used to monitor individual cell voltages of a battery during a float or equalization operation, during a charge/discharge, and up to 4 battery current channels during charge/discharge (with optional current transducers).

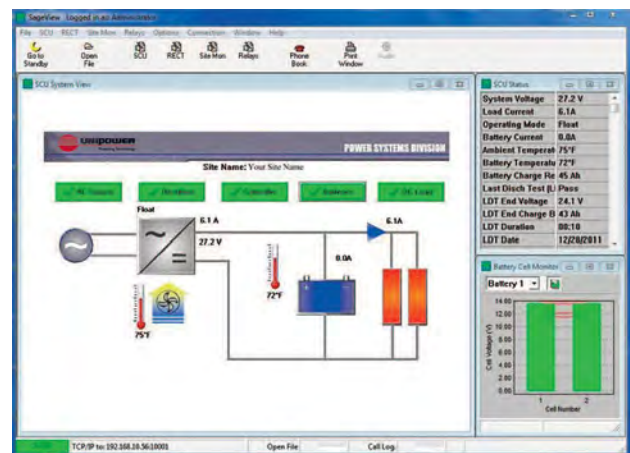
Each Sageon® Shield battery monitor is capable of monitoring the voltages of up to 24 cells or mono-blocks and can be expanded via the optional Sageon® Battery Monitor (SBM) to monitor 3 additional battery strings of 24 cells or mono-blocks each.

Using the TCP-IP/SNMP remote communications ability of the Sageon® Shield battery monitor and the SageView® software installed on your PC, cell voltages can be viewed in 'real time'. From within SageView®, your cell voltage data can be viewed in various formats, providing you with a snapshot of the health of your power plant's batteries.

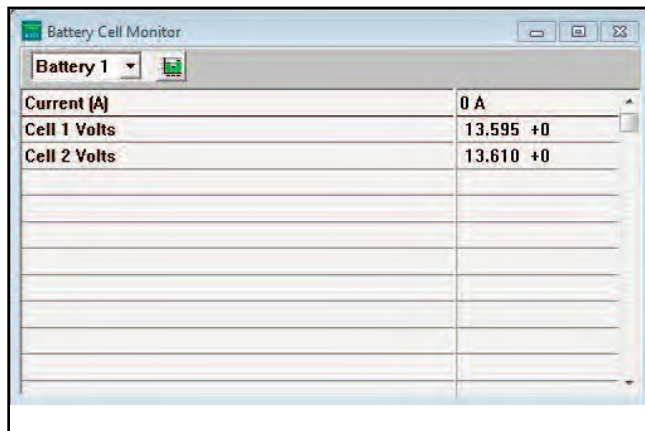
The Sageon® Shield ships as standard with: in-line power protection devices, 1 x 10' (~3m) ambient temperature sensor, 1 x 10' (~3m) battery temperature sensor, and a 25' (~7.6m) battery string (24 cell) wiring harness with 5/16" battery post adaptor terminals.



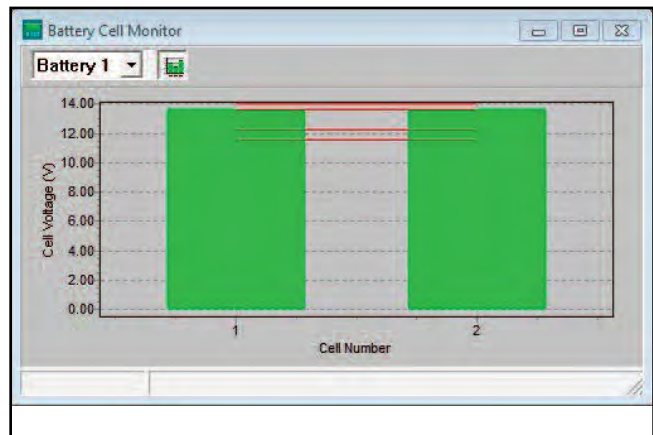
SAGEVIEW® Screenshot (Main Battery Screen)



SAGEVIEW® Screenshot
(Battery Cell Monitor - Text)



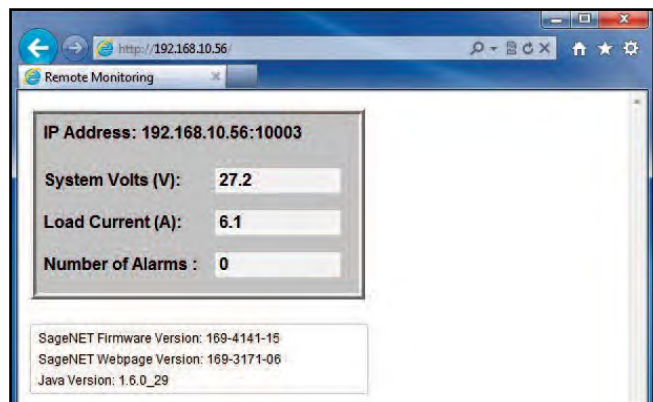
SAGEVIEW® Screenshot
(Battery Cell Monitor - graph)



SAGEVIEW® Screenshot (SCU Status)

Parameter	Value
System Voltage	27.2 V
Load Current	6.1A
Operating Mode	Float
Battery Current	0.0A
Ambient Temperature	70°F
Battery Temperature	68°F
Battery Charge Remain	45 Ah
Last Disch Test (LDT)	Pass
LDT End Voltage	24.2 V
LDT End Charge Bat1	44 Ah
LDT Duration	00:10
LDT Date	12/29/2011

SAGEVIEW® Screenshot (HTTP webpage)



Sageon Shield Specifications

Environmental

Operating Temperature	-15°F (-25°C) to 158°F (70°C)
Storage Temperature	-15°F (-25°C) to 158°F (70°C)
Humidity	0 to 90% RH (non-condensing)
Altitude	13,100ft (3,993m)
Cooling	Natural Convection

Physical

Width	19" (483mm)
Height	1.75" (44mm) - 1RU
Depth	14.5" (368mm)
Weight	14.0 lbs (6 kg)

Sageon Shield Order Code: 103.4023.01

Accessories & Optional Equipment

Description	Order Code
23" Rack Mount Centering/Offset Kit	385.2999.70A
Sageon Battery Monitor (SBM)	103.4011.00
Temperature Concentrator Board	ERT190.6010
Temperature Sensor Cable - 10ft (3m)	385.5941.03
Temperature Sensor Cable - 10ft (3m)	385.5941.03
Temperature Sensor Cable - 20ft (6m)	385.5941.06
Temperature Sensor Cable - 50ft (15m)	385.5941.15
Temperature Sensor Cable - 100ft (30m)	385.5941.30
Cell Monitoring Wire Harness - 10ft	385.7812.10
Cell Monitoring Wire Harness - 25ft	385.7812.25
Cell Monitoring Wire Harness - 50ft	385.7812.50
Cell Monitoring Wire Harness - 100ft	385.7812.100
Battery Post Adaptor - #10 Ring	385.6151.03
Battery Post Adaptor - 1/4in Ring	385.6151.04
Battery Post Adaptor - 5/16in Ring	385.6151.05
Battery Post Adaptor - 3/8in Ring	385.6151.06
Battery Post Adaptor - 1/2in Ring	385.6151.07
Power Input - 5/16in Ring	385.6151.15
Current Transducer Kit - 200A, Closed Window (Circ. 1.25" dia.)	385.5971.200
Current Transducer Kit - 400A, Closed Window (Circ. 1.25" dia.)	385.5971.400
Current Transducer Kit - 600A, Closed Window (Rect. 2.51" x 0.82")	385.5971.600
Current Transducer Kit - 200A, Split Core (Circ. 0.84" dia.)	385.5972.200
Current Transducer Kit - 400A, Split Core (Circ. 0.84" dia.)	385.5972.400
Current Transducer Kit - 800A, Split Core (Rect. 4.00" x 1.57")	385.5972.800

ABOUT GREEN CUBES TECHNOLOGY

Green Cubes Technology harnesses over 30 years of industry experience to ensure we design, develop and deliver solutions for the most challenging energy needs. We offer battery technology innovation, application design and performance management to drive productivity, scalability and sustainability.

Green Cubes provides complete power systems to the stationary power industry. With the addition of the Guardian and Aspiro Product lines offered under the UNIPOWER brand, these industry proven DC plant systems serve critical applications all around the world. Green Cubes offers complete power solutions including energy storage, power conversion, and seamless integration.

For more information, email contact@greencubes.com or visit greencubes.com

