

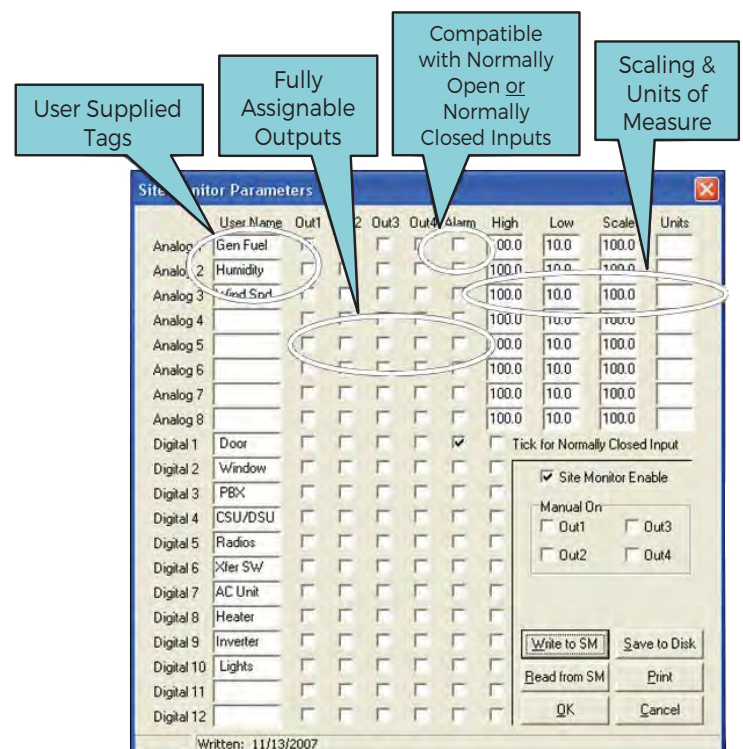
SAGEON® Site Monitor (SSM)

The SAGEON® Site Monitor (SSM) is an auxiliary module for the SAGEON® family of DC Power Systems. The SSM provides additional I/O for the power plant, enabling users to monitor the status of additional equipment through the SAGEON® system. The SSM includes twelve digital inputs and eight analog inputs for monitoring devices such as site security (door and window magnetic switches), AC inverter status and alarms, Generator status (fuel level & oil pressure) and HVAC status and alarms. Also included are four voltage free (dry) Form C control output relays. The control relays can be automatically activated in response to an event on any of the SSM's user configurable digital or analog inputs or manually activated from a PC running SageView® software.

The SSM is easily configured using UNIPOWER's SageView® software program included with each SAGEON® DC Power Plant. The Site Monitor configuration screen (shown below) provides a simple, intuitive user interface.

The SSM provides a simple, integrated solution to many common application challenges eliminating the need to purchase separate monitoring equipment. Using it's remote communication capabilities and C&D Technologies SageView® software, the SAGEON® system can be remotely monitored, allowing the appropriate response to site events.

- Integration of site alarms
- Integration of Inverter status
- Individual load monitoring
- Integration of auxiliary equipment status



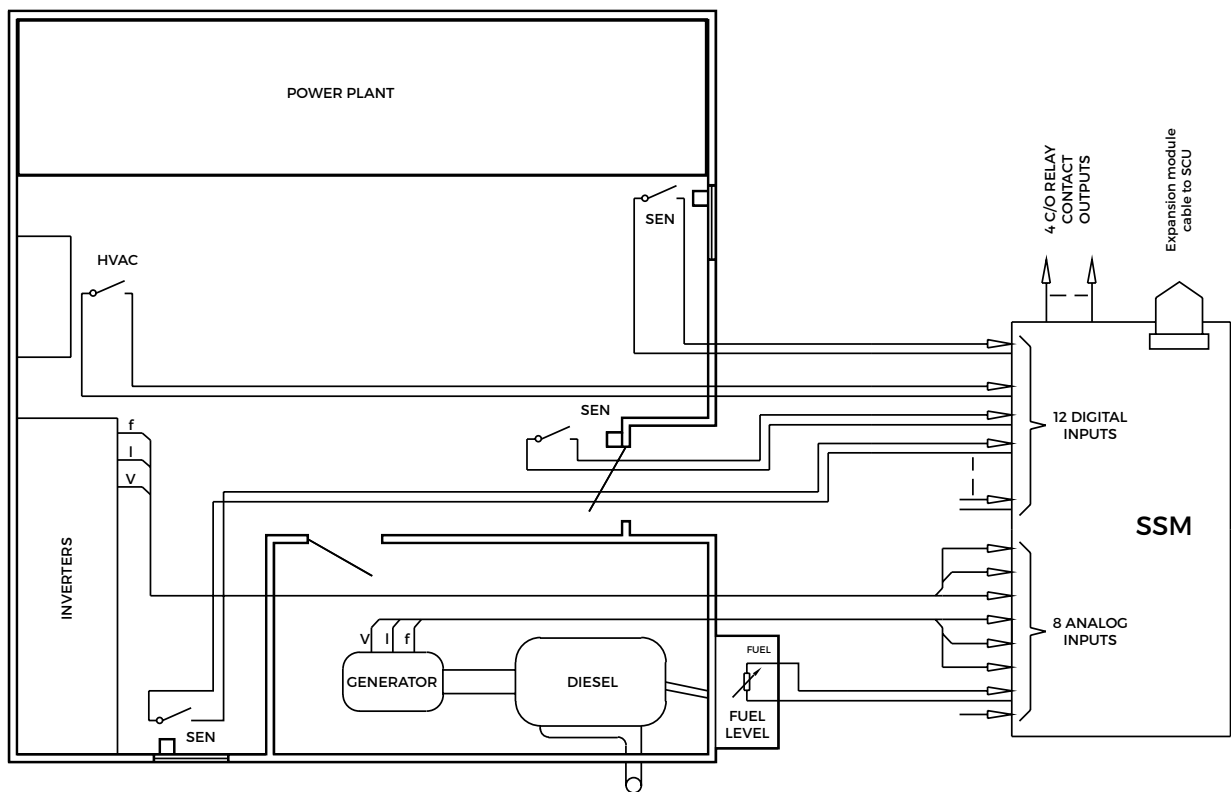
Specifications

Electrical

Analog Inputs	Qty. 8, Input Range: 0 to +4 Vdc Full Scale, Over-voltage and reverse polarity protected Scaling factor and low/high alarm levels are user programmable
Digital Inputs	Qty. 12, Voltage free (dry) contact closure Active state: User defined (active open or closed)
Analog & Digital Inputs	Electrical Isolation: Non-isolated. Each input source must be electrically isolated
Digital Outputs	Qty. 4, Voltage free (dry) 1 Form C relay contacts, Output rating: 1A @ 30Vdc
General	Power source: self-powered from the SAGEON® System Interface Plant connection: 16 conductor round ribbon cable to the SAGEON® System Interface Maximum distance from SCU: 30 feet (9.14 meters)

Mechanical

Dimensions, ins (mm)	5.11 (130) D x 9.37 (238) W x 3.14 (80)
----------------------	---



ABOUT GREEN CUBES TECHNOLOGY

Green Cubes Technology harnesses over 30 years of industry experience to ensure we design, develop and deliver solutions for the most challenging energy needs. We offer battery technology innovation, application design and performance management to drive productivity, scalability and sustainability.

Green Cubes provides complete power systems to the stationary power industry. With the addition of the Guardian and Aspiro Product lines offered under the UNIPOWER brand, these industry proven DC plant systems serve critical applications all around the world. Green Cubes offers complete power solutions including energy storage, power conversion, and seamless integration.

For more information, email contact@greencubes.com or visit greencubes.com

