



3768 Series

19" x 3RU Breaker Panel

-48V or +24V | 500A

Overview

The 3768 Series Panel provides a compact power distribution solution with high-capacity, current-interrupting breakers.

The 3768 Breaker Panel has an input voltage options of +24V or -48V and has a maximum capacity of 500 amps.

Up to 18 breakers rated from 5A to 100A can be installed, subject to the overall capacity not being exceeded.

The 3768 Breaker Panel can be supplied with or without a 600A / 50mV shunt.

Features

- 3RU High: 5.22"
- 19-Inch Rack Mounting
- Current Capacity: 500A
- Operating Voltage: +24 or -48VDC
- 18 Breakers - 5A to 100A
- LED Alarm Indicator
- Form C Relay Contacts

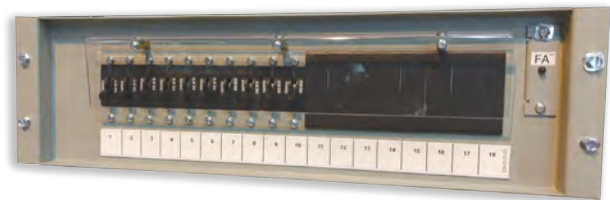
Standard Configurations

| Voltage | Shunt | Alarm | Breaker Positions | Part Number |
|--------------------|-------|-------|-------------------|-------------|
| +24V or -48V | none | Yes | 18 | 111-3768-00 |
| | 600A | | | 111-3768-10 |

Available Breakers

| Amps | Part Number | Amps | Part Number |
|------|-------------|------|--------------|
| 5A | 274.2920.05 | 50A | 274.2920.50 |
| 10A | 274.2920.10 | 60A | 274.2920.60 |
| 15A | 274.2920.15 | 70A | 274.2920.70 |
| 20A | 274.2920.20 | 80A | 274.2920.80 |
| 25A | 274.2920.25 | 90A | 274.2920.90 |
| 30A | 274.2920.30 | 100A | 274.2920.100 |
| 40A | 274.2920.40 | | |

Note: Breakers must be ordered separately.



Safety Certification

UL60950-1 2nd Edition
 CSA22.2, No. 60950-1 2nd Edition
 EN60950-1 2nd Edition

3768 Specifications (Typical at 25°C Unless Otherwise)

Input/Output

| | | |
|---------------------------------------|-------------------------|-------------------------|
| Breaker Type | AM1 with Alarm Contact | |
| Breaker Current Rating | 5A to 100A | |
| Breaker Interrupt Rating ¹ | 10kAIC | |
| Panel Capacity | 500A | |
| Breaker Configuration | 18 Breakers | |
| Alarm Fuses | GMT (recommended 0.5A) | |
| Voltage | -48V Nominal 42-60VDC | +24V Nominal 21-30VDC |

Alarms

| | |
|-----------------------|----------------------------|
| Alarm Indicator | Red LED |
| LED Status Indication | OFF = Normal ON = Alarm |
| Alarm Relays | Form-C |

Notes:

1. 50kAIC available to special order, consult Applications Engineering.

Environmental

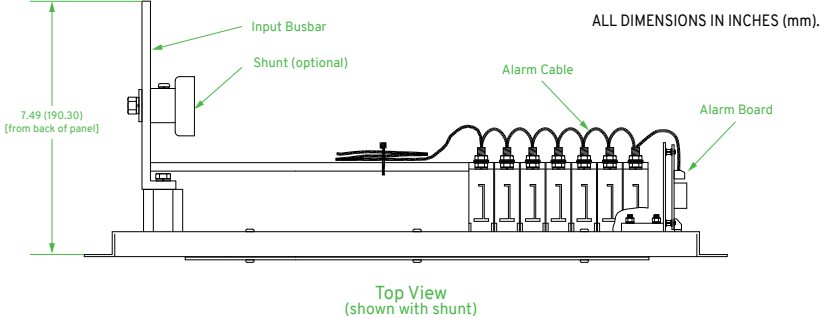
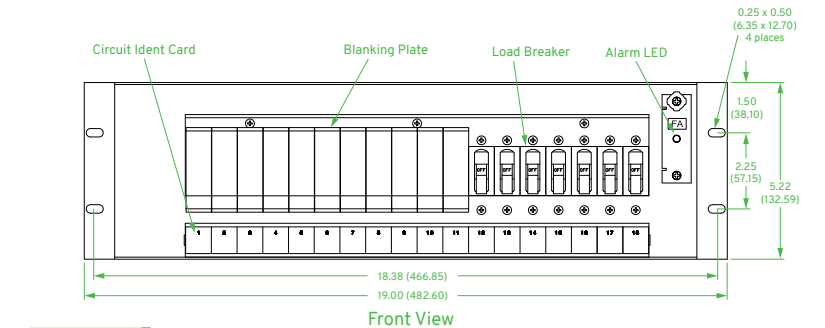
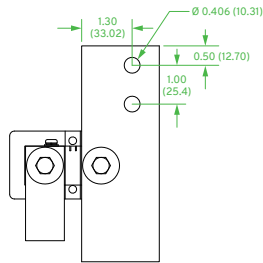
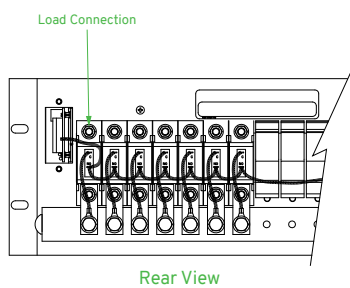
| | |
|-----------------------|---------------------------|
| Operating Temp. Range | -10°C to +70°C |
| Storage Temperature | -40°C to +85°C |
| Humidity | 0% to 95%, Non-Condensing |

Physical

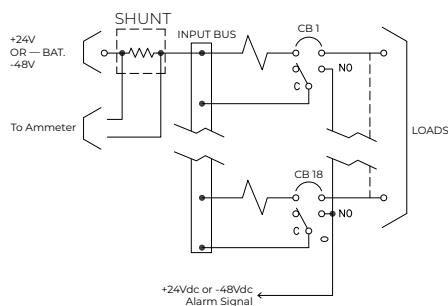
| | |
|-----------------------------|---|
| Panel Material | Steel |
| Finish | Powder Coat Gray |
| Dimensions, Inches (mm) | 5.22 (132.6) H x 23.00 (584.2) W x 7.49 (190.3) D |
| Weight (excluding breakers) | 16 lbs. (7.3 kg.) |
| Rack Mounting | 23 Inch x 3RU |

Connections

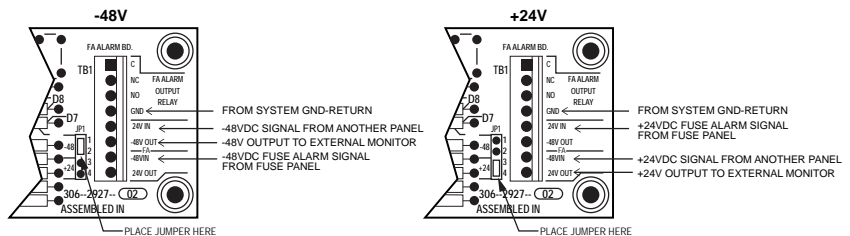
| | |
|---------|--|
| Bus Bar | Accepts 2-hole lug (3/8" Hdw, 1" C-to-C) |
| Breaker | ¼ - 20 Threaded Studs/Nuts |
| Alarm | Compression/Screw Terminals |



Schematic



Alarm Board Wiring Detail



ABOUT GREEN CUBES TECHNOLOGY

Green Cubes Technology harnesses over 30 years of industry experience to ensure we design, develop and deliver solutions for the most challenging energy needs. We offer battery technology innovation, application design and performance management to drive productivity, scalability and sustainability.

Green Cubes provides complete power systems to the stationary power industry. With the addition of the Guardian and Aspiro Product lines offered under the UNIPOWER brand, these industry proven DC plant systems serve critical applications all around the world. Green Cubes offers complete power solutions including energy storage, power conversion, and seamless integration.

For more information, email contact@greencubes.com or visit greencubes.com

